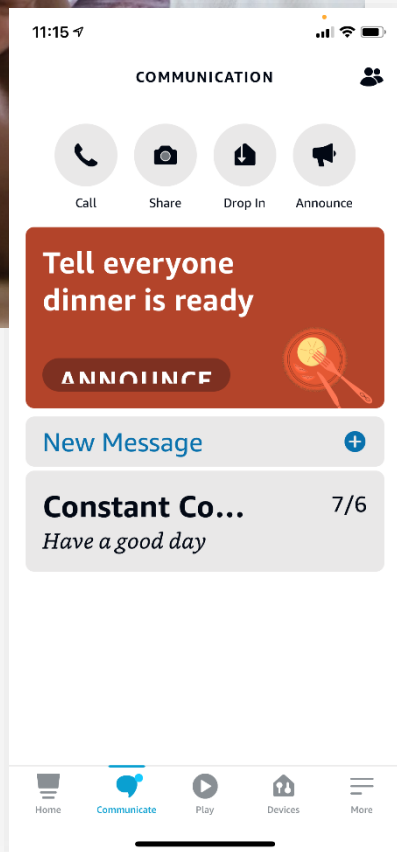
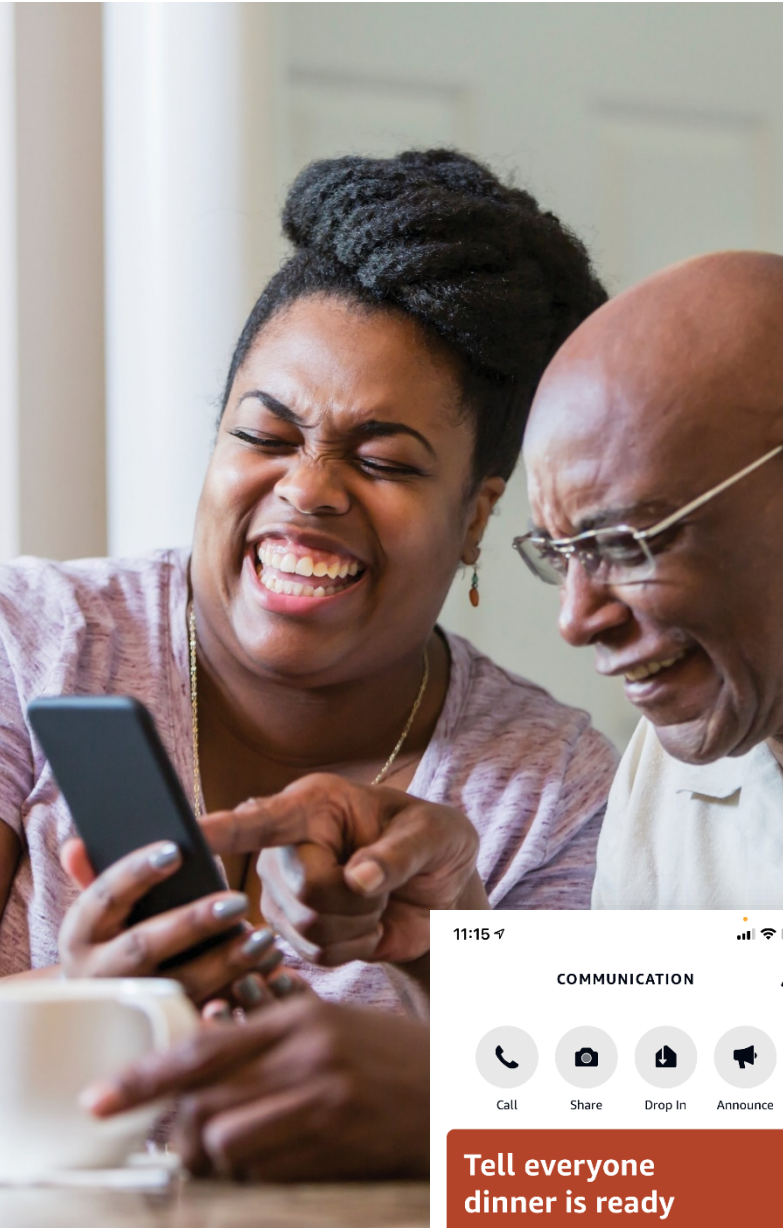


Family/Caregiver Guide



How to Connect with an Alexa Device from Your Smart Phone

First, Add Your Contacts

Add Mom or Dad's unlisted Alexa device phone number into your cell phone contacts. Your number should already be added to theirs.



Next, Download the Alexa App

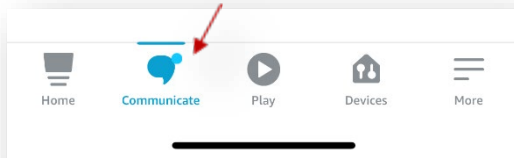
Go to the app store on your mobile device and search for "Amazon Alexa app." Once downloaded, sign in with your personal Amazon account, or choose to create one. Use your personal email and cell phone number. No need to add devices. Follow steps to allow contacts and microphone use.

App icon looks like this:



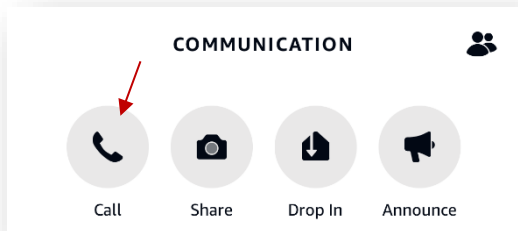
COMMUNICATING THROUGH ALEXA

Start by Opening the App and Select Communicate



To Make a Call

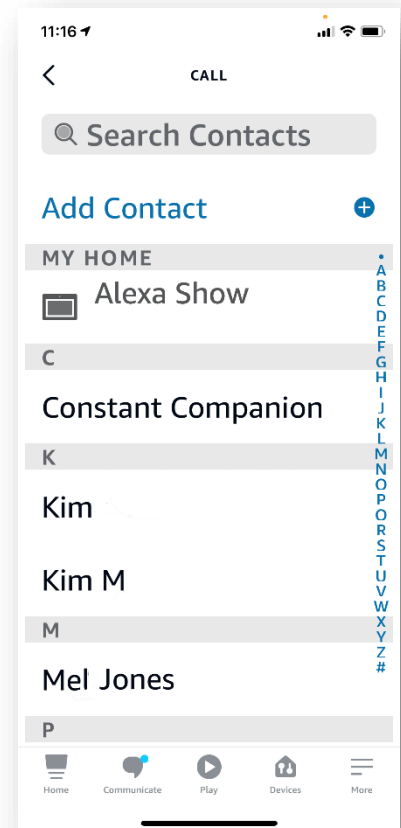
After logging in to the app, open the Communication tab.



Then, click the icon at the top of the screen that looks like a phone to open your contact list. Choose Mom or Dad's Alexa device phone number. Tap the number to place the call now. You may choose to voice call or video call.

To Send a Message

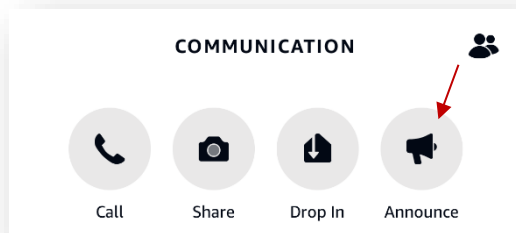
Login to the app and open the Communication tab. Then, click the New Message bar. Choose Mom or Dad's Alexa device phone number. Type or speak your message. When you are ready to send, press the blue arrow button. Your message is on its way!



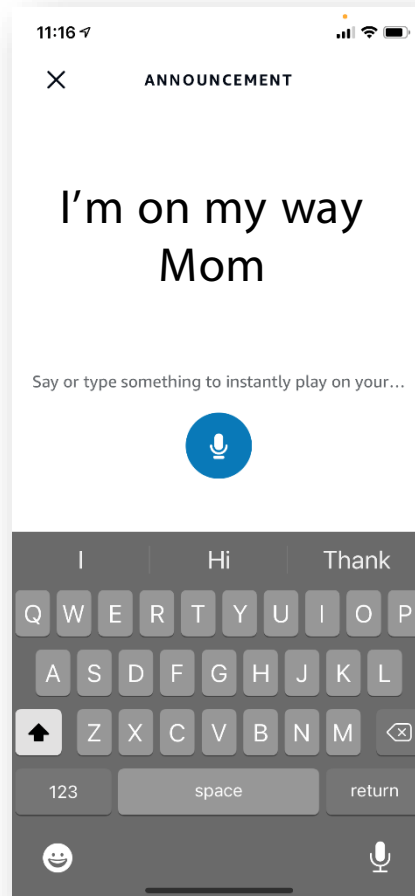
Announcements

You can make an announcement to the Companion system's Alexa device from the Alexa app on your smartphone.

Tap Communicate, tap Announce. Select the contact you want to reach. Your announcement will be heard from all speakers on the Companion system.

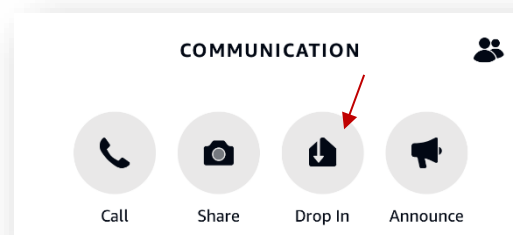


Tap or say "Alexa"



Drop In

If permissions have been granted, you can drop in on the Companion system's Alexa device from the Alexa app on your smartphone.



Tap Communicate, tap Drop-In. Select the contact you want to reach. Your Drop-In will begin.



We are here to help!

The Constant Companion support team is available to assist with setup or anything else you may need. Simply call 833-791-9200.